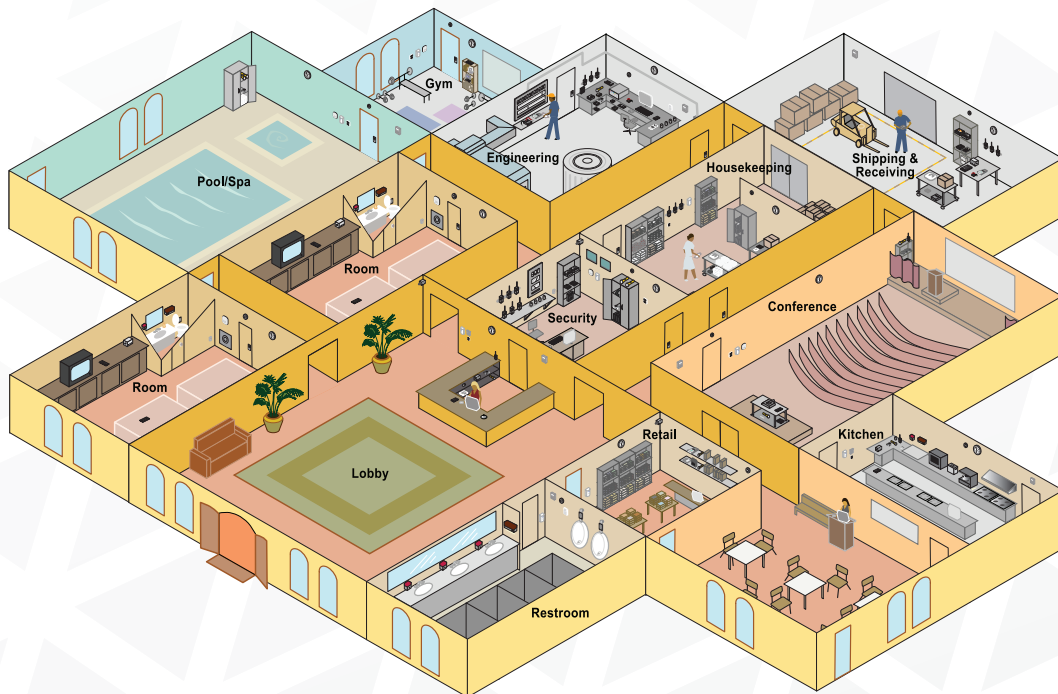




# POWER YOUR PROFITABILITY

## RELIABLE POWER SOLUTIONS FOR HOSPITALITY

PROCELL® offers the world's first dual-portfolio professional batteries. By selecting the right battery to match the power needs of your professional device, you can make your batteries last longer\* and replace them less often. All PROCELL® batteries are manufactured using superior cell design ensuring our highest quality cell construction. Our batteries are tested in order to guarantee the highest quality and reliable performance.



### PROCELL® INTENSE (FOR HIGH DRAIN DEVICES)

A new battery range specifically engineered to deliver precise pulses of energy while lasting up to 50% longer\* in high-drain professional devices\*\* such as flashlights, touchless hand sanitizer dispensers, and touchless restroom devices.

### PROCELL® CONSTANT (FOR LOW TO MEDIUM DRAIN DEVICES)

A new battery range specifically engineered to deliver consistent performance while lasting longer\* in low-drain professional devices, including door key pads, thermostats, TV/DVD remotes, and wireless keyboards and mice.

### PROCELL® LITHIUM COIN & HIGH POWER LITHIUM BATTERIES

PROCELL® Lithium Coin batteries deliver reliable and safe power to professional devices, while PROCELL® High Power Lithium Batteries can handle high rate discharge for a variety of applications, under intermittent or continuous drain. Both battery types are available at scale to power industrial devices.

\*VS. PRIOR PROCELL AA, AAA, C, D AND 9V BATTERIES

\*\*HIGH-DRAIN DEVICES TYPICALLY OPERATE MOTORS, PUMPS, AND MECHANISMS THAT CREATE MOTION OR DISPENSE.

**PROCELL®**  
BY THE DURACELL COMPANY

**HD SUPPLY**



FOR  
**HIGH  
DRAIN**  
DEVICES

# POWER YOUR PROFITABILITY



## TURN BATTERIES FROM A COST CENTER INTO A COST SAVER

PROCELL<sup>®</sup> understands how critical it is for professional end-users to drive the profitability of their businesses. When it comes to batteries, this can be achieved through minimizing costly battery replacements.

By conducting intensive device testing and analysis in our labs, PROCELL<sup>®</sup> has discovered that a way to dramatically extend alkaline battery life and cut replacement costs is to engineer device-specific industrial alkaline batteries, each with unique power profiles.

## THE WORLD'S FIRST DUAL PORTFOLIO OF PROFESSIONAL BATTERIES

PROCELL<sup>®</sup> Intense is a new battery range specifically engineered to deliver precise pulses of energy while lasting longer in high-drain professional devices\*. High drain devices typically have motors, pumps or mechanism that drives a motion as an output.

\*vs. prior PROCELL<sup>®</sup> AA, AAA, C, D, and 9V batteries

## RECOMMENDED FOR:

- PAPER TOWEL DISPENSER
- TOILET/URINAL VALVE
- BLOOD PRESSURE MONITOR
- ELECTRONIC DOOR LOCK
- SECURITY CAMERA
- THERMOMETER
- WALL SAFE
- 2-WATT RADIO
- CAMERA FLASH
- INFUSION PUMP
- DIGITAL CAMERA
- AUTOMATIC ODORIZER
- SOAP/SANITIZER DISPENSER
- HANDS FREE FAUCET
- SURGICAL STAPLER
- FLASHLIGHT/HEADLAMP
- MEDICAL CAUTER DEVICES
- WIRELESS VIDEO DOORBELL
- MOTION SENSOR TRASH CAN
- MOTORIZED WINDOW SHADE/BLIND

| HD SUPPLY # | MFR #  | DESCRIPTION | PACK QTY. |
|-------------|--------|-------------|-----------|
| 280850      | PX1500 | AA          | 144       |
| 967823      | PX1500 | AA          | 24        |
| 280711      | PX2400 | AAA         | 144       |
| 967824      | PX2400 | AAA         | 24        |
| 967826      | PX1300 | D           | 12        |
| 967825      | PX1400 | C           | 12        |
| 967827      | PX1604 | 9V          | 12        |

FOR MORE INFORMATION ON PROCELL<sup>®</sup> INTENSE OR  
TO ORDER TODAY, REACH OUT TO YOUR ACCOUNT MANAGER





FOR  
**LOW  
DRAIN**  
DEVICES

# POWER YOUR PROFITABILITY



## TURN BATTERIES FROM A COST CENTER INTO A COST SAVER

PROCELL® understands how critical it is for professional end-users to drive the profitability of their businesses. When it comes to batteries, this can be achieved through minimizing costly battery replacements.

## THE WORLD'S FIRST DUAL PORTFOLIO OF PROFESSIONAL BATTERIES

The PROCELL® superior general-purpose battery has been completely redesigned for longer lasting\*, consistent performance.

\*vs. prior PROCELL® AA, AAA, C, D, and 9V batteries

## SUPERIOR QUALITY AND RELIABILITY GUARANTEED

PROCELL® batteries are manufactured using superior cell design ensuring our highest quality cell construction. Batteries are tested in order to guarantee the highest quality and reliable performance. Environmental testing is also conducted to insure dependable and consistent use.

## FROM PROFESSIONALS TO PROFESSIONALS

PROCELL® is supported by a global B2B-dedicated multifunctional team, including R&D, marketing and commercial teams.

| HD SUPPLY # | MFR #  | DESCRIPTION | PACK QTY. |
|-------------|--------|-------------|-----------|
| 967821      | PC1500 | AA          | 144       |
| 157755      | PC1500 | AA          | 24        |
| 967822      | PC2400 | AAA         | 144       |
| 158003      | PC2400 | AAA         | 24        |
| 158325      | PC1400 | C           | 12        |
| 158425      | PC1300 | D           | 12        |
| 158476      | PC1604 | 9V          | 12        |

## RECOMMENDED FOR:

- TIMER
- 2-WAY RADIO
- ALARM CLOCK
- INSULIN PUMP
- FLUSHOMETER
- GLUCOMETER
- LASER LEVEL
- WIRELESS KEYBOARD
- SECURITY KEYPAD
- MOTION / OCCUPANCY SENSOR
- REMOTE CONTROL
- WEIGHING SCALE
- PULSE
- WIRELESS MOUSE
- DIGITAL THERMOSTAT
- BLUETOOTH TRACKER
- HEART RATE / ACTIVITY MONITOR
- SMOKE / CARBON MONOXIDE DETECTOR

**FOR MORE INFORMATION ON PROCELL® CONSTANT OR  
TO ORDER TODAY, REACH OUT TO YOUR ACCOUNT MANAGER**



# POWER YOUR PROFITABILITY

## TURN BATTERIES FROM A COST CENTER INTO A COST SAVER

PROCELL® understands how critical it is for professional end-users to drive the profitability of their businesses. When it comes to batteries, this can be achieved through minimizing costly battery replacements.

## SUPERIOR QUALITY AND RELIABILITY GUARANTEED

PROCELL® batteries are manufactured using superior cell design ensuring our highest quality cell construction. Batteries are tested in order to guarantee the highest quality and reliable performance. Environmental testing is also conducted to insure dependable and consistent use.

## FROM PROFESSIONALS TO PROFESSIONALS

PROCELL® is supported by a global B2B-dedicated multifunctional team, including R&D, marketing and commercial teams.

| HD SUPPLY # | MFR #  | DESCRIPTION    | PACK QTY. | CASE QTY. |
|-------------|--------|----------------|-----------|-----------|
| 967830      | PX2016 | CR2016 INTENSE | 5         | 40        |
| 967831      | PX2025 | CR2025 INTENSE | 5         | 40        |
| 967829      | PX2032 | CR2032 INTENSE | 5         | 40        |
| 967828      | PX123  | CR123 INTENSE  | 12        | 216       |
| 201933      | PXCR2  | CR2 INTENSE    | 12        | 216       |



## PROCELL® HIGH POWER LITHIUM BATTERIES 3.0V

Designed for professional end-users in the safety, security, smart home and medical markets. Primarily used to power various wireless sensors, LED flashlights, security cameras, smoke and carbon monoxide detectors



## PROCELL® LITHIUM COIN BATTERIES

Designed for small, professional devices such as security sensors, key FOBs, glucometers, and other related high-tech sensing devices and monitors. The redesigned anode, cathode and can deliver improved high drain and low drain performance compared to prior PROCELL® lithium coin batteries

**FOR FULL ASSORTMENT OF SPECIALTY BATTERIES,  
REACH OUT TO YOUR ACCOUNT MANAGER**



# RELIABLE POWER SOLUTIONS FOR HOSPITALITY

## CONFERENCE ROOMS

---

Automatic Air Fresheners /  
Automatic Odorizers: C, D, 9V  
Clocks: AA, AAA  
Touchless Hand Sanitizer Dispensers:  
AA, AAA, C, D  
Laser Pointers: AA, AAA  
Remote Controls: AA, AAA  
Smoke Detectors: AA, 9V  
Tape Recorders: AA, AAA, 9V  
Thermostats: AA, AAA, 9V  
Wireless Microphones: AA, 9V

## ENGINEERING

---

Diagnostics: AA, AAA, C, D  
Cameras: AA, AAA  
Door Locks: AA, AAA, 9V  
Infrared Thermometers: AA, 9V  
Pagers: AA, AAA  
Thermostats: AA, AAA, 9V  
Wireless Keyboards: AA  
Wireless Mice: AA, AAA

## GUEST ROOMS

---

Clock Radios: AA, C, D  
CO Detectors: AA, 9V  
Door Locks: AA, AAA, 9V  
Occupancy Sensors: AA  
Remote Controls: AA, AAA  
Safes: AA, C  
Smoke Detectors: AA, 9V  
Thermostats: AA, AAA, 9V  
Wireless Keyboards: AA  
Wireless Mice: AA, AAA

## GYM

---

Automatic Air Fresheners /  
Automatic Odorizers: C, D, 9V  
Clocks: AA, AAA  
Door Locks: AA, AAA, 9V  
Occupancy Sensors: AA  
Remote Controls: AA, AAA  
Thermostats: AA, AAA, 9V

## HOUSEKEEPING

---

Automatic Air Fresheners /  
Automatic Odorizers: C, D, 9V  
Black Lights: AA  
Door Locks: AA, AAA, 9V  
Flashlights: AA, C, D

## KITCHEN

---

Clocks: AA, AAA  
Food Scales: AA, C, D  
Food Thermometers: AA, AAA  
Hand Mixers: AAA, D  
Infrared Thermometers: AA, 9V  
Metal Detectors: AA, C  
Timers: AA, AAA  
Touchless Hand Sanitizer  
Dispensers: AA, AAA, C, D  
Touchless Paper Towel Dispensers: AA, C, D  
Touchless Soap Dispensers: AA, C, D

## LOBBY

---

Automatic Air Fresheners /  
Automatic Odorizers: C, D, 9V  
Calculators: AA, AAA  
Handicap Door Openers: 9V  
Money Counters: AA, C, D  
Pagers: AA, AAA  
Smoke Detectors: AA, 9V  
Touchless Hand Sanitizer Dispensers: AA,  
AAA, C, D

## POOL/SPA

---

Automatic Air Fresheners /  
Automatic Odorizers: C, D, 9V  
Door Locks: AA, AAA, 9V  
Flashlights: AA, C, D  
Humidity Meters: AA, 9V  
Smoke Detectors: AA, 9V  
Thermostats: AA, AAA, 9V

## RESTROOMS

---

Automatic Air Fresheners /  
Automatic Odorizers: C, D, 9V  
CO Detectors: AA, 9V  
Light Sensors: AA, AAA  
Smoke Detectors: AA, 9V  
Thermostats: AA, AAA, 9V  
Touchless Faucets: AA, D  
Touchless Hand Sanitizer Dispensers:  
AA, AAA, C, D  
Touchless Paper Towel Dispensers: AA, C, D  
Touchless Soap Dispensers: AA, C, D  
Touchless Toilets: AA  
Touchless Urinals: AA

## RETAIL

---

Flashlights: AA, C, D  
Smoke Detectors: AA, 9V

## SECURITY

---

Clocks: AA, AAA  
Cameras: AA, AAA  
Door Locks: AA, AAA, 9V  
Touchless Hand Sanitizer Dispensers:  
AA, AAA, C, D  
Motion Sensors: 123, AA  
Pagers: AA, AAA  
Security Cameras: 123, CR2, AA, AAA, C, D  
Two-Way Radios: AA, AAA

## SHIPPING/RECEIVING

---

Clocks: AA, AAA  
CO Detectors: AA, 9V  
Freight Scales: AA, C, D  
Smoke Detectors: AA, 9V  
Two-Way Radios: AA, AAA

Red = PROCELL® INTENSE  
Black = PROCELL® CONSTANT

**HD**SUPPLY®

## CHOOSE PROCELL® TODAY

CONTACT PROCELL® TODAY TO LEARN HOW WE CAN HELP YOU TO REDUCE  
OVERALL MAINTENANCE COSTS AND DELIVER SAVINGS TO YOUR CUSTOMERS!

**877-2-PROCELL | WWW.PROCELL.COM**