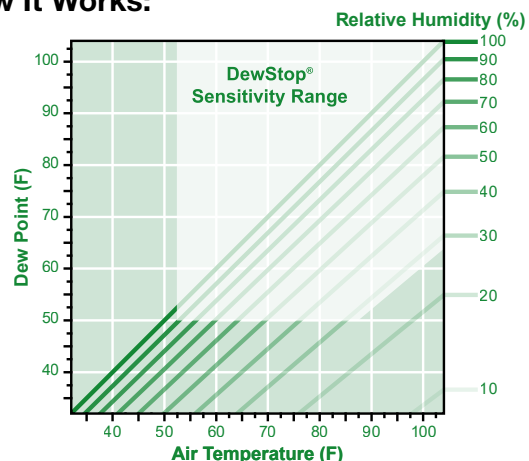


DewStop[®] ADJUSTABLE

Control your bathroom fan when
your family forgets to



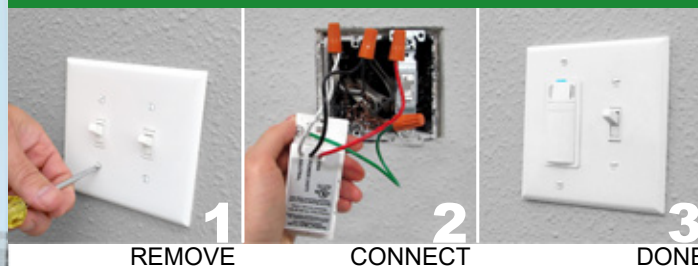
How It Works:



Let DewStop Take Control

Picture never having to worry about the bath fan being left on all day, or worse, not being turned on at all. Without proper ventilation, humidity and condensation from showers will cause mold growth. Mold can cause a variety of respiratory ailments, as well as damage your bathroom. DewStop's sensors detect these problems before they start, and run your fan for you. Imagine the peace of mind - knowing your bathroom will always be given the right amount of ventilation, every time.

EASY INSTALL... QUICK AS 1-2-3!



works with ANY new or existing exhaust fan



FS-300

Fan Control

Color Options:
white, light almond

Electrical Input:
120 volts @ 60Hz

Maximum Fan Load:
1/8th hp or 3 amps

May be used to comply with:



DewStop[®]

www.DewStop.com

1-360-876-2974

INTRODUCING DEWSTOP ADJUSTABLE FAN CONTROL YOUR BATH FAN CONTROLLER SOLUTION

CONDENSATION SENSOR

- ▶ Turns fan on when condensation is present and off when dry

LED INDICATOR LIGHT

- ▶ Blue LED indicator light activates to let you know when the fan is running

DewStop® Features & Benefits

CONDENSATION SENSORS (adjustable)

- ▶ Turns ON the fan when condensation is present and OFF when dry
- ▶ Adjust sensors to solve moisture problem
- ▶ Helps fight mold

QUE™ TECHNOLOGY

- ▶ Ultra moisture-sensing adaptive technology (patent pending)

COUNTDOWN TIMER (adjustable)

- ▶ You choose how long your fan will run
- ▶ Great for tenant and family use

MANUAL ON/OFF CONTROL

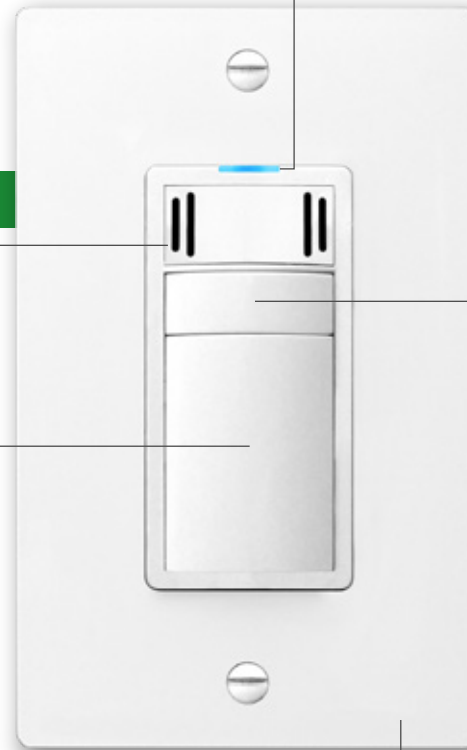
- ▶ Manual fan control for immediate ventilation

LED INDICATOR LIGHT

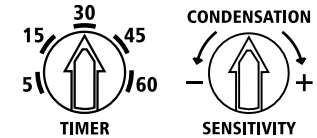
- ▶ Lets you know the fan is ON

CONCEALED ADJUSTMENT SETTINGS

- ▶ Tamper-proof settings cover



ADJUSTABLE SETTINGS



- ▶ Adjustable condensation sensor
- ▶ Adjustable timer
- ▶ Removable no-tamper cover

FAN ON/OFF

- ▶ Manual Control

INCLUDED WALL PLATE

- ▶ Control fits all decora/GFCI/rocker single and multi-position wall plates

