

175 RPM FLOOR MACHINE

- All Metal Construction • 20" Deck • 19" Pad Driver**
- Triple Planetary All Steel Gear Box • Universal Clutch Plate**
- Safety Lock-Out Switch • 50' Cord • 66-Frame Motor**
- Warranty**

**REN08002-VP
883075**

www.GoRenown.com



175 RPM FLOOR MACHINE SAFETY PRECAUTIONS

Specifications:

- **Model:** REN08002-VP
- **Power:** 1.75 hp actual (1.5 hp as CSA-US rated)
- **Deck Size:** 20" (50.8 cm)
- **Voltage:** 110 volt
- **Speed:** 175 rpm
- **Power Cable:** 50 ft. (15.2 m) safety yellow
- **Weight:** 109 lbs (49.4 kg)
- **Amp Draw:** 12.0 amps
- **Warranty:** 5 years motor and gear box. 5 years metal components.

! WARNING ! IMPORTANT SAFETY INSTRUCTIONS

Carefully read and understand this manual before operating this machine.

This machine must be grounded!

This floor/finishing machine shall be grounded while in use to protect the operator from electric shock. Grounding provides a path of least resistance for electric current. This machine is equipped with a cord having an equipment-grounding conductor and grounding plug. The plug must be plugged into an appropriate outlet that is properly installed and grounded in accordance with all local codes and ordinances. Do not remove the ground pin under any circumstances.

This machine is for use on a nominal 120-volt circuit and has a grounding plug that resembles the plug illustrated in *Figure 1*. Make sure that the machine is connected to an outlet having the same configuration as the plug. No adapter should be used with this machine.

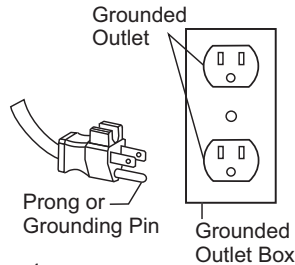


Figure 1

This machine is intended for commercial use. It is constructed for use in an indoor environment and is not intended for any other use. Use only recommended accessories.

1. Do not operate machine:

- Unless trained and authorized.
- Unless you have read and understand the operators manual.
- In flammable or explosive areas.
- With a damaged cord or plug.
- If not in proper operating condition.
- In outdoor areas.
- In standing water.
- With the use of extension cords.

2. Before operating machine:

- Make sure all safety devices are in place and operating properly.

3. When using machine:

- Do not run machine over cord.
- Do not pull machine by cord or plug.
- Do not pull cord around sharp edges or corners.
- Do not unplug by pulling on the cord.
- Do not stretch cord.
- Do not handle plug with wet hands.
- Keep cord away from heated surfaces.
- Report machine damage or faulty operation immediately.

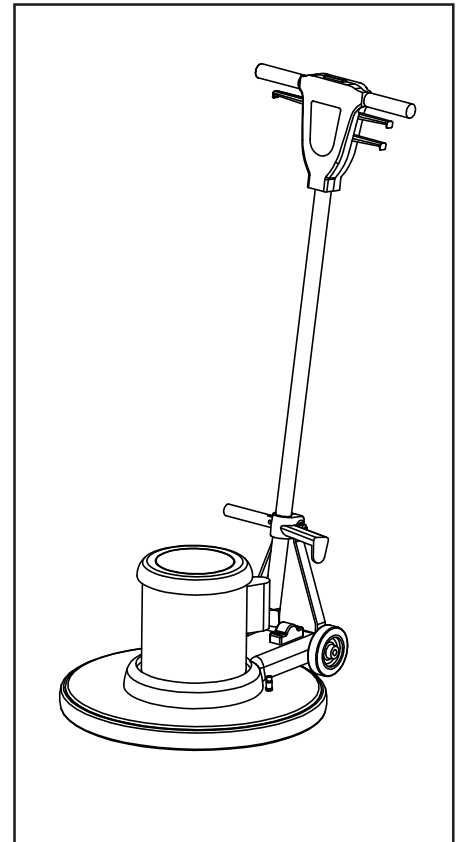
4. Before leaving or servicing machine:

- Turn off machine.
- Unplug cord from outlet.

5. When servicing machine:

- Unplug cord from outlet.
- Use manufacturer supplied or approved replacement parts.

! To avoid electric shock, please replace the power cord immediately if any damage is detected. Repairs must be performed only by authorized and qualified persons.





175 RPM FLOOR MACHINE OPERATING INSTRUCTIONS

General Use:

1. Remove any obstructions or other obstacles in the area which is to be cleaned.
2. Place the handle in the upright position and tilt machine back until handle rests on the floor.

Be sure the machine is not plugged into an outlet.

3. Attach the pad driver or brush to the machine by placing the clutch plate over the gearbox hub and turning the driver/brush 1/4 turn.
4. Place machine back into its upright position.
5. Plug power cord into a grounded outlet.

Never use an extension cord in conjunction with the standard power cord.

6. The handle height may be adjusted by lifting up the compression handle which is located on the right side of the handle tube about 1 foot above floor level. Release the compression handle and adjust handle to safe operating height, then push back down on the compression handle to lock the handle in operating position.
7. To start the machine, press the red safety button on the top of the upper switch housing, and then squeeze either of the operating triggers. *(the safety button must be depressed prior to squeezing the operating triggers).*
8. When the machine is in operation, both hands should be placed on the switch housing *(upper handle)*.
9. During operation, to make the machine go right, gently raise the handle. To make the machine go left, gently lower the handle.
10. To stop the machine at any time, simply release the operating trigger(s) and the machine will stop automatically.

Maintenance:

To keep the machine performing well for many years, please follow the following maintenance procedures.

Always confirm that the machine is unplugged prior to performing any maintenance or repairs.

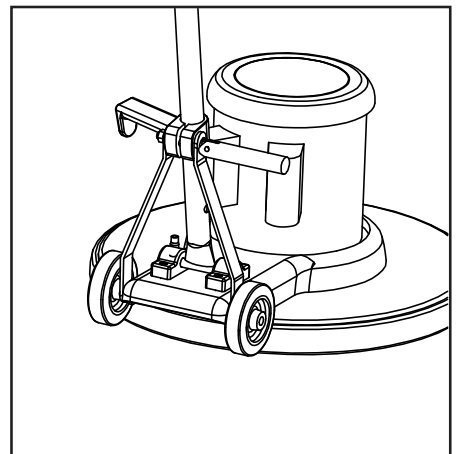
1. Unplug machine as soon as you are done using it.
2. Tilt machine back and remove pad driver or brush.

Never store a low speed machine with the pad driver or brush mounted to the machine.

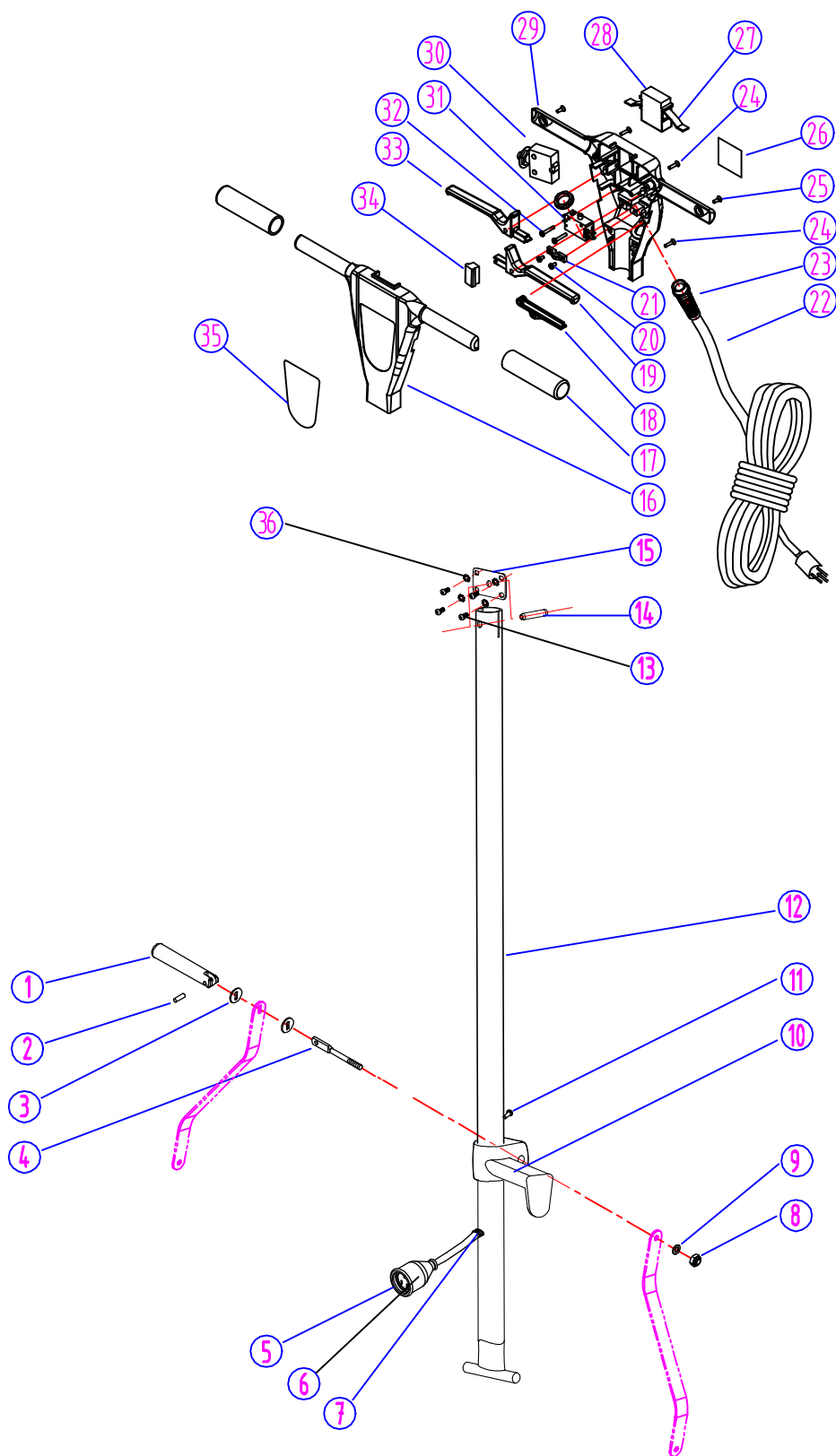
3. Clean the outside of the machine with a mild cleaner.
4. Check power cord for any damage. If damage is detected, replace power cord immediately.
5. Lubricate wheels with a water resistant lubricant once a month.
6. Check machine for loose or missing nuts and bolts, and replace as necessary.
7. If the machine is used in a dusty environment, you may remove the motor cover and blow the motor clean with compressed air. This will ensure proper ventilation, and allow the motor to run cooler.

Storage:

1. Unplug machine from power source and wrap cord on handle.
2. Tilt machine back and remove pad driver or brush.
3. Store machine in upright position and in a dry area.



175 RPM FLOOR MACHINE HANDLE GROUP

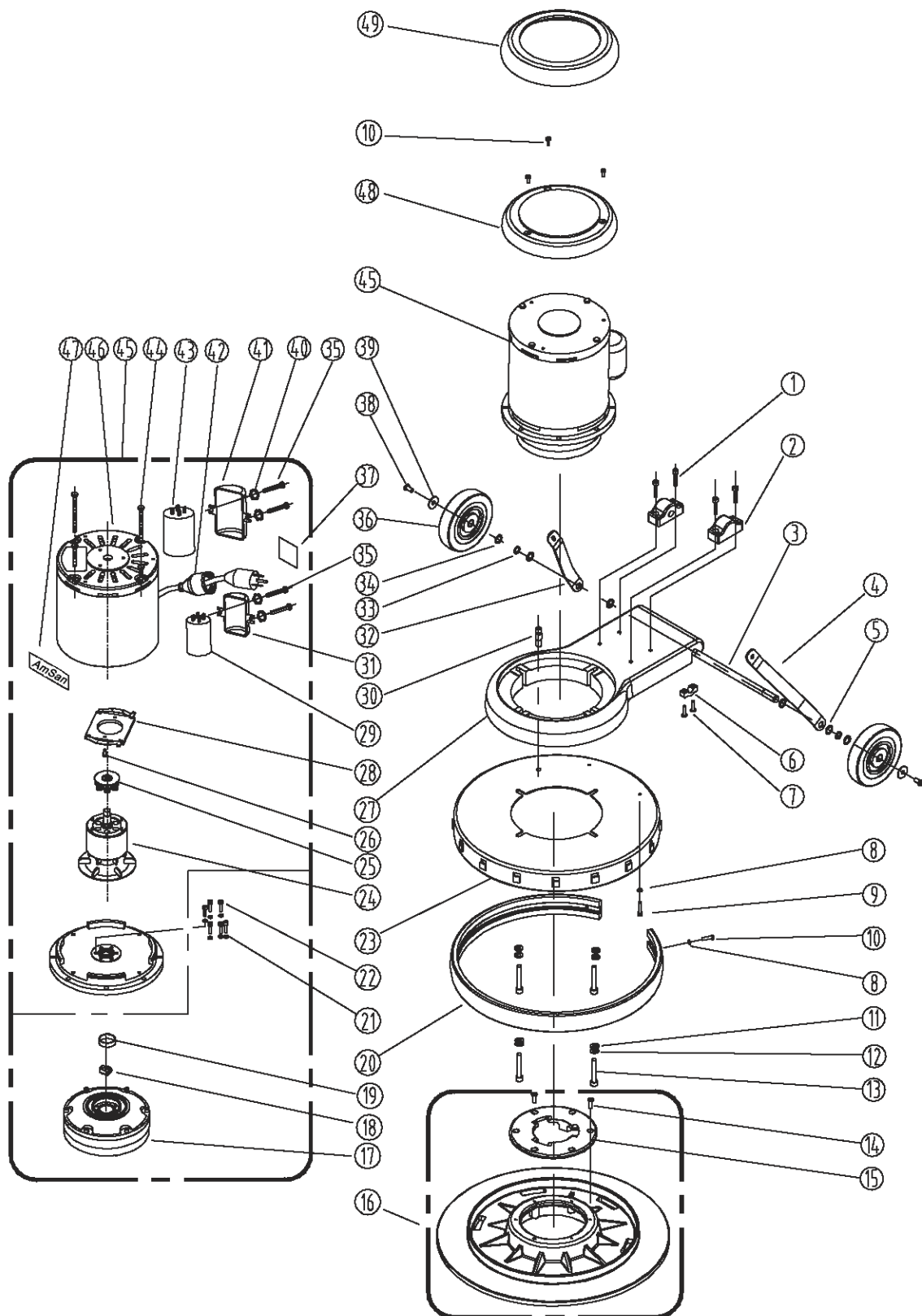




175 RPM FLOOR MACHINE HANDLE GROUP PARTS LIST

DIA NO	PART NUMBER	DESCRIPTOIN	NO REQ'D
1	VF30016	HANDLE RELEASE	1
2	VF30017	SCREW	1
3	VF30018	WASHER,PLAIN	2
4	VF300152	BOLT HANDLE RELEASE	1
5	VF45125	CORD,HANDLE	1
6	VF30014	COVER, HOOK	1
7	VF50120A	GROMMET	1
8	VF13504	NUT,LOCK,M10	1
9	VF30027	WASHER,PLAIN	1
10	VF300141	CORD WRAP BLOCK	1
11	VF13493	SCREW,M6X10	1
12	AS312206B	TUBE	1
13	VF14222	SCREW,M5X12	4
14	VF13570	PIN	1
15	VF40169	CONNECTION PLATE	1
16	AS22010	FRONT COVER	1
17	VF48310	HANDLE GRIP	2
18	AS220065	LEVER,SOLUTION	1
19	AS220055	LEVER,LEFT,SWITCH	1
20	VV13661	SCREW,M4X12	2
21	VF48309	CLAMP BLOCK	1
22	VF45119	CORD,POWER SUPPLY	1
23	AS22009	STRAIN RELIEF,CORD	1
24	GT13009	SCREW,M5X30	5
25	GT13008	SCREW,M5X20	2
26	VF41004AS	SERIAL TAG	1
27	GV40218	SPRING,SAFETY BUTTON	1
28	GV40209	SAFETY BOTTON	1
29	AS22012	REAR COVER	1
30	VF99010C	BREAKER, CIRCUIT, 17A / A-0701HS	1
31	VF44203	SWITCH ASSY	1
32	VF14212	SCREW,M3X25	2
33	AS220045	LEVER,RIGHT,SWITCH	1
34	AS312203	COVER	1
35	VF47035AS	LABEL,FRONT COVER	1
36	VF13604	TEETH WASHER,M5	4

175 RPM FLOOR MACHINE BASE GROUP

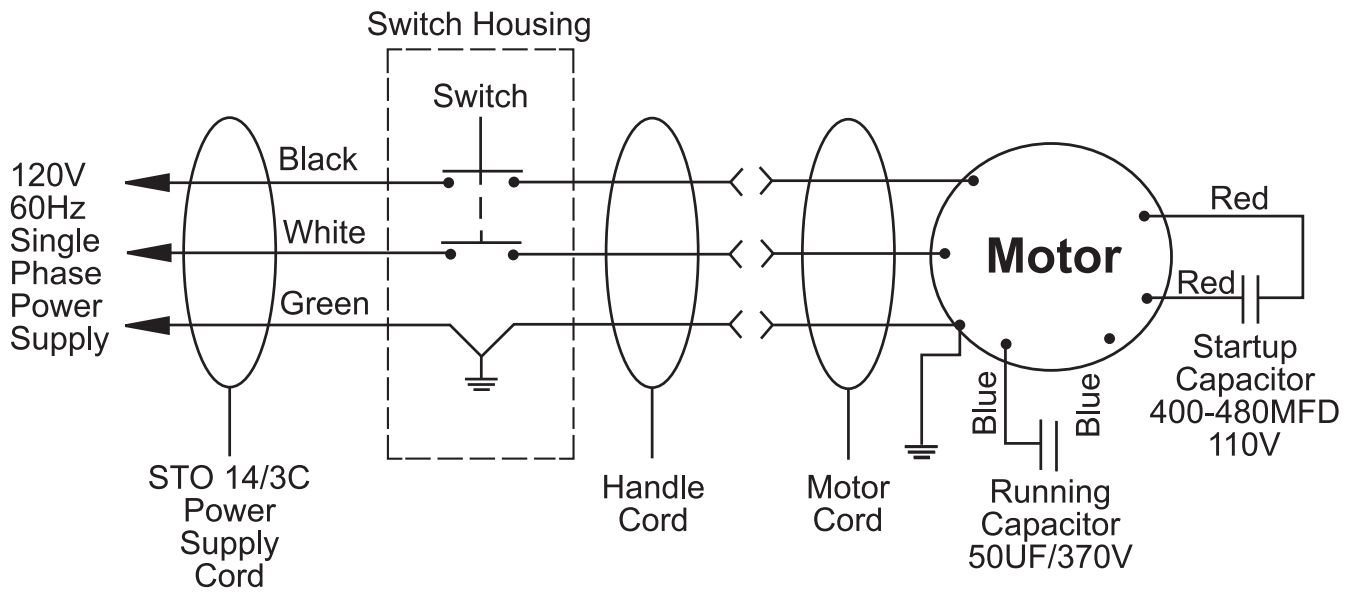




175 RPM FLOOR MACHINE BASE GROUP PARTS LIST

DIA NO	PART NUMBER	DESCRIPTION	NO REQ'D
1	GT13080	SCREW, M6 x 30	4
2	VF30011B	CLAMP BLOCK, HANDLE	2
3	VF30026	AXLE	1
4	VF30020	BRACKET, LEFT HANDLE	1
5	VV20274	WASHER, PLAIN, M13	4
6	GV40235	CLAMP BLOCK, AXLE	2
7	VV13621	SELF-TAPPING SCREW, ST, M5 x 20	4
8	VF13474A	WASHER, PLAIN, M5	4
9	VF13613	SCREW, M5 x 20	2
10	VA13474	SCREW, M5 x 16	5
11	VF13524	WASHER, PLAIN, M8	4
12	VF13519	WASHER, LOCK, M8	4
13	GT13016	SCREW, M8 x 55	4
14	MF-VF002-4A	SELF-TAPPING SCREW, 1/4"-1"	6
15	MF-VF002-2	CLUTCH PLATE	1
16	MF-VF022	19" PAD HOLDER	1
17	VF999802B	GEAR BOX	1
18	VF99021	COULPING	1
19	MT01102	SLEEVE	1
20	VF30004	BUMPER, 20"	1
21	VV13601	WASHER, LOCK, M5	6
22	VV13636	SCREW, M5 x 30	6
23	VF30006B	FRAME, 20"	1
24	YLQ19200B	ROTOR WITH FAN ASSY	1
25	YCQ12301	CENTRIFUGAL SWITCH	1
26	VV20509	SCREW, M5 x 10	2
27	VF30008B	ALUMINIUM BASE, MOTOR	1
28	YCQ12302	STATIONARY SWITCH	1
29	VF999854	RUNNING CAPACITOR, 50uF / 250V	1
30	VF40152	BARB, HOSE	1
31	YLQ14601	MOUNTING FRAME, CAPACITOR (SMALL)	1
32	VF30019	BRACKET, HANDLE, RIGHT	1
33	VF13520	WASHER, LOCK	2
34	VF13602	WASHER, PLAIN, M12	2
35	VF14214	SCREW, M5 x 8	4
36	VF48202	WHEEL, 5"	2
37	VF40994	READ MANUAL LABEL	1
38	VF44012	SCREW, M6 x 12.7	2
39	VF13666	WASHER, M6	2
40	VF13604	WASHER, LOCK, EXTERNAL TOOTH	4
41	YCQ10615	MOUNTING FRAME, CAPACITOR (LARGE)	1
42	AS41902	PLUG PROTECTOR, LARGE FEMALE	1
43	VF999805	START CAPACITOR, 400-450UF / 150V	1
44	YLQ17507	BOLT	4
45	VF999792AS	MOTOR, ASSY	1
46	VF999787B	MOTOR, 110V, 1.5HP	1
47	VF41079AS	LABEL, AMSAN	1
48	VF44001	TOP COVER, MOTOR	1
49	AS312214	BUMPER	1

175 RPM BUFFER WIRING DIAGRAM





175RPM BUFFER FOR PURCHASE,
SERVICE AND SUPPORT INFORMATION
VISIT **www.GoRenown.com**