

POOL GUIDE

YOUR ONE-STOP SHOP FOR ALL YOUR POOL NEEDS

5 Easy Steps To A Clean Pool

Summer fun starts with a clean, safe pool. Color-coded AquaGuard® products make it easy.

BALANCE

See page 2

CHLORINATE

See page 3

SHOCK

See page 4

ALGAE CONTROL

See page 5

CLARIFY

See page 6

Improve Your Pool Maintenance Skills

Learn about our training classes. See page 6

Got A Salt Pool?

Maintenance is easy. See page 7



Pool Furniture Also Inside

We've got you covered. See pages 14-15

Pool Care Advice from the Experts

Call 1.800.SOS.POOL or visit us online.

HD SUPPLY®

1.800.431.3000 • En español 1.800.511.5652 • hdsupplysolutions.com/pool

Balanced water is critical to pool quality and swimmer comfort.

Optimum Balance Levels:

- pH Balance: 7.4-7.6
- Alkalinity: 80-120 ppm
- Calcium Hardness: 200-400 ppm

Why You Need To Balance Your Pool:

- To maximize chlorine effectiveness
- To prevent eye and skin irritation
- To limit pool equipment damage

STEP

AQUAGUARD
5-Step Pool Care System

Salt Pool
Compatible



Treats the following:



See pages 4-5 for troubleshooting tips.



AquaGuard® 30 Lb pH Up Pail

- Fast-Dissolving Granular Pool Soda Ash
- Quickly Raises pH And Alkalinity

◆
116600



AquaGuard® 30 Lb pH Down Dry Acid

- Fast-Dissolving Granular Pool Acid
- Lowers pH And Alkalinity Quickly And Safely

◆
116601



AquaGuard® 30 Lb Alkalinity Booster Pail

- Buffers Pool Water For Better pH Control
- Increases Total Alkalinity Of Pool Water And pH Of Pool Water
- Fast-Dissolving Sodium Bicarbonate

◆
116602



AquaGuard® 30 Lb Calcium Hardness Increaser

- Prevents Corrosion Of Pool Surface And Equipment Caused By Low Calcium Levels
- Fast-Dissolving

◆
116603



AquaGuard® 1 Gallon Calcium Hardness Reducer

- Reduces The Calcium Hardness Of Pool Water So That A Proper pH Balance May Be Obtained
- Reduces Scale Formation

◆
116604



AquaGuard® 8 Lb Stabilizer Conditioner

- Shields Chlorine From The Destructive Effects Of Sunlight
- Reduces Chlorine Consumption
- Essential If Liquid Or Calcium-Based Chlorines Are Used

117943



AquaGuard® 1 Gallon Metal Out

- Prevents And Stops The Growth Of Metal Stains, Discoloration And Scale Formation
- Treats Up To 40,000 Gallons

◆
116607



AquaGuard® 1 Gallon Muriatic Acid

- Powerful pH Reducer Helps Prevent Scaling Caused By Calcium-Based Chlorine And/Or Hard Water
- Ready To Use
- Not Available In All Regions

◆
116608
Pkg Of 2

Chlorine makes the water clean and clear for swimmers.

Why You Need To Chlorinate Your Pool:

- Chlorine disinfects the water
- It kills both bacteria and algae
- 2.0-4.0 ppm levels are optimal

Salt Pool Compatible



Treats the following:



See pages 4-5 for troubleshooting tips.

STEP

AQUA GUARD
5-Step Pool Care System

STABILIZED CHLORINE



AquaGuard® Power 99 50 Lb 3" Chlorine Tablets

- 99% Active Ingredient
- Jumbo 8 Oz Tablets
- Sanitizes And Suppresses Algae And Bacteria
- Individually Wrapped
- Slow-Dissolving For Long-Lasting Sanitation

502074



AquaGuard® 50 Lb 1" Trichloro Chlorinating Tablets

- Premium Quality
- Manufactured To Resist Crumbling
- Stabilized, Slow-Dissolving Tablets For Long-Lasting Chlorine Residual
- Ideal For In-Line Chlorinators

116611



AquaGuard® 50 Lb Trichloro Chlorinating Sticks

- 8 Oz Size
- Premium Quality
- Manufactured To Resist Crumbling
- Stabilized, Slow-Dissolving Sticks For Long-Lasting Chlorine Residual
- Ideal For In-Line Chlorinators

116612



AquaGuard® 50 Lb Dichloro All-In-One Chlorinating Granules

- Superconcentrated Formula
- 99% Sodium Dichlor
- Will Not Cloud Water, Raise pH Or Create Calcium Deposits On Tile
- Fast-Dissolving

116613

ALTERNATIVE FORMS OF CHLORINE



AquaGuard® 40 Lb Pool Salt

- For Use In Pools And Spas With Salt Chlorinators
- Brands May Vary By Region
- Not Available In All Markets

116038



AquaGuard® 50 Lb Bromine Tablets For Pools And Spas

- Perfect For Indoor Pools, Spas And Tubs
- Slow-Dissolving For Controlled Release
- Sanitizes And Prevents Algae Without Chlorine Odor

116615



CASE OF 3

AquaGuard® 1 Gallon Liquid Chlorine

- Antimicrobial, Kills Algae And Bacteria
- Will Not Cloud Pool Water
- Safe For All Types Of Pools
- Easy To Use

114222



DISSOLVES INSTANTLY

AquaGuard® 95 Lb Blended Calcium Hypochlorite

- 59.5% Calcium Hypochlorite
- Swimming Pool Water Oxidizer
- Great For Shocking Swimming Pool Water
- Kills Bacteria, Destroys Organic Contaminants, Controls Algae
- Brand May Vary By Region

Mfg #REF-50-1220

114008

Periodic shocking removes waste materials like suntan oils, perspiration, body oils, and other organic waste.

For best results, balance pH to 7.4-7.6 before shocking.

Why You Need To Shock Your Pool:

- To bring up chlorine and free chlorine levels
- To disinfect the water
- To restore water clarity

Salt Pool
Compatible



Treats the following:



See below for troubleshooting tips.

STEP

AQUA GUARD
5-Step Pool Care System

Add Shock Quick Now, Swim 15 Minutes Later

Use Shock Quick as a weekly shock treatment, and swimmers can enter the pool after just 15 minutes.



AquaGuard® 1 Lb Trichloro Shock Quick

- Dissolves Instantly
- Clears And Clarifies Pool Water
- Reduces Other Chemical Needs
- Each Packet Treats 15,000 Gallons
- Trichloro-Based Formula

◆
116619
Pkg Of 30



AquaGuard® 1 Lb Trichloro Super Shock Quick

- Quick Chemical Boost
- Controls Algae And Bacteria
- Superconcentrated Formula
- Reduces Other Chemical Needs
- Each Packet Treats 24,000 Gallons

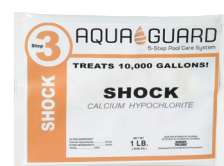
◆
116647
Pkg Of 34



AquaGuard® 50 Lb Sodium Persulfate Non-Chlorine Shock

- Eliminates Odor And Oxidizes Organic Buildup
- Does Not Affect Chlorine Levels, So Swimmers Can Enter Pool Immediately After Application
- Helps Clarify Water And Improve Filtration

◆
116621



AquaGuard® 1 Lb Calcium Hypochlorite Shock

- 59.5% Calcium Hypochlorite
- Swimming Pool Water Oxidizer
- Great For Shocking Swimming Pool Water
- Kills Bacteria, Destroys Organic Contaminants, Controls Algae
- Convenient 1 Lb Bags
- Brand May Vary By Region
- Mfg #REF-50-1225

◆
114009
Case Of 24

TROUBLESHOOTING TIPS



CLOUDY WATER - Clarifiers (116630 and 116631) will aid in removing particles, but the source of the problem should also be determined.

1. Check filtration system for malfunction.
2. Test pH and total alkalinity and adjust if necessary. Adjust alkalinity with Alkalinity Booster (116602/116636). Adjust pH using pH Up (116600/116636) or pH Down Dry Acid (116601).
3. If total alkalinity and pH are correct, shock pool water with Shock Quick Pouch (116619/116647) or Non-Chlorine Shock Treatment (116621) and run the pump on a longer cycle.



EYE/SKIN IRRITATION - pH is out of proper range.

1. Test pH and adjust using pH Up (116600/116636) or pH Down Dry Acid (116601).
2. If pH is correct, shock pool water with Shock Quick Pouch (116619/116647) or Non-Chlorine Shock Treatment (116621) and run the pump on a longer cycle.



CHLORINE ODOR - Chloramines present due to inadequate levels of free chlorine.

1. Test pH and adjust using pH Up (116600/116636) or pH Down Dry Acid (116601).
2. Shock pool water with Shock Quick Pouch (116619/116647) or Non-Chlorine Shock Treatment (116621) and run the pump on a longer cycle.



GREEN ALGAE - Caused by inadequate chlorine levels.

1. Brush algae off pool surfaces.
2. Test pH and adjust using pH Up (116600/116636) or pH Down Dry Acid (116601).
3. Shock pool water with Shock Quick Pouch (116619/116647) or Non-Chlorine Shock Treatment (116621), using three times the normal shock dosage.
4. Run the pump on a longer cycle.
5. Treat with Green Algaecide (116625).

STEP

Algaecides work hand in hand with chlorine and shock treatments to prevent and remove algae and bacteria buildup.

To treat algae, you must first identify the type of algae present, and then use the task-specific algaecide to prevent or treat the problem.

When To Apply Algaecides:

- When visible algae is present
- As part of a routine maintenance program
- Prior to the start of pool season

Salt Pool Compatible



Treats the following:



See below for troubleshooting tips.



SELECT ALGAE CONTROL BASED ON THE TYPE OF ALGAE

AquaGuard® 1 Gallon Algaecide And Clarifier

- Ready-To-Use
 - Combination Algaecide And Clarifier For All Pool Types
 - Treats Up To 53,000 Gallons (Per Gallon)
 - Nontoxic, Nonfoaming
- 116623**
Case Of 6



AquaGuard® 1 Gallon Green Algaecide

- Concentrated Formula
 - Most Effective Against Green Algae
 - Treats Up To 320,000 Gallons
 - Nontoxic, Nonfoaming
- 116625**



AquaGuard® 1 Gallon Phosphate Remover

- Concentrated Formula
 - Eliminates Phosphates, Which Are The Food Source For Algae
 - Impedes The Ability Of Algae To Grow
- 116627**



AquaGuard® 10 Lb Black Algaecide

- Highly Concentrated Formula
 - Most Effective On Black Algae
 - Slow-Dissolving
 - Will Not Raise pH
- 116628**



AquaGuard® 1 Gallon 60% Algaecide

- Concentrated Formula
 - Top-Selling Premium Algaecide In The Industry
 - Nontoxic, Nonfoaming, Nonmetallic, Poly Blend
 - Treats And Prevents All Types Of Algae
- 116624**



AquaGuard® 1 Gallon Mustard Algaecide

- Concentrated Formula
 - Effective For Treatment And Prevention Of Mustard Algae
 - Treats Up To 256,000 Gallons
- 116626**



TROUBLESHOOTING TIPS



BROWN/MUSTARD ALGAE - Appears in patches. It brushes away easily, but reappears quickly.

1. Brush algae off pool surfaces.
2. Test pH and adjust using pH Up (116600/116636) or pH Down Dry Acid (116601).
3. Shock pool water with Shock Quick Pouch (116619/116647) or Non-Chlorine Shock Treatment (116621), using three times the normal shock dosage.
4. Run the pump on a longer cycle.
5. Treat with Mustard Algaecide (116626).



BLACK ALGAE - Appears as black spots. **Note: These instructions and Black Algaecide may only be used on unpainted, concrete-type pools.**

1. Brush pool surfaces with wire algae brush.
2. Test pH and adjust using pH Up (116600/116636) or pH Down Dry Acid (116601).
3. Shock pool water with Shock Quick Pouch (116619/116647) or Non-Chlorine Shock Treatment (116621), using three times the normal shock dosage.
4. Run the pump on a longer cycle.
5. Treat with Black Algaecide (116628) and use Algaecide 60% Concentrate (116624) for maintenance.



BLUE/GREEN WATER - Water looks blue/green.

1. Test pH and adjust using pH Up (116600/116636) or pH Down Dry Acid (116601).
2. Use Ultra Clarifier (116631) and vacuum any fallout to avoid staining.



SAFE FOR SALTWATER POOLS

All AquaGuard® chemicals are compatible with saltwater systems.



Clarifiers keep your pool crystal clear by combining small particles into large ones for easy filter removal.

When To Use Clarifiers:

- When water is cloudy
- After algaecide treatment
- Prior to the start of pool season

Salt Pool Compatible



Treats the following:



See pages 4-5 for troubleshooting tips.

AQUA GUARD®
5-Step Pool Care System

AquaGuard® 1 Gallon Spa Water Defoamer

- Eliminates And Prevents Foaming In Spas When Spa Jets Are In Use
 - Safe For All Types Of Spas
- 116634**



AquaGuard® 1 Gallon Ultra Pool Water Clarifier

- Clears Cloudy Water
 - Use 2 Oz Per 10,000 Gallons
- 116631**



AquaGuard® 1 Gallon Pool Water Clarifier

- Treats Cloudy Or Discolored Water
 - Settles Particles To Pool Bottom For Easy Vacuuming And Filtration
- 116630**



AquaGuard® 1 Gallon Tile And Spa Cleaner

- Dissolves Scale And Oils On Ceramic, Porcelain And Fiberglass Pools
- Clings To Surfaces For Easy Cleaning
- Easy Rinse Formula

Super-Concentrated Formula Treats Up To 640,000 Gallons

116632



AquaGuard® 1 Gallon Filter Cleaner And Degreaser

- Safe For All Types Of Filters
- Removes Grime, Oil And Organics
- Helps Restore Filter Efficiency

116633



IMPROVE YOUR POOL CARE SKILLS WITH OUR TRAINING CLASSES

PHTA® Certified Pool Operator® Certification Class*

Learn the skills to maintain your pool and eliminate expensive outsourcing costs. Upon successful completion of this in-depth, two-day course, you will earn a certification that is recognized by the Pool & Hot Tub Alliance (PHTA®, formerly NSPF® and APHA®). HD Supply provides the training and proctors the exam.

Topics Covered

- Pool calculations and formulas
- Chemical dosage formulas
- Disinfection (superchlorination)
- Water chemistry and balancing
- Filtration
- Pool safety standards
- Identifying pool hazards
- Understanding federal and state codes

*Course fees apply. A passing score of 75% is required to receive certification.

Swimming Pool Maintenance Class

Learn how to professionally manage and maintain one of your property's most valuable amenities—the swimming pool. This three-hour class is designed to give you an overview of daily pool operations and attendance is free.

Topics Covered

- Chemical testing and water balance
- Filtration systems and mechanical maintenance
- Liability and safety aspects of pool management
- Chemical safety

ENROLL TODAY
For more information, visit hdsupplysolutions.com/training or call **1.800.431.3015, ext. 12465.**

SALTWATER POOL CARE

Saltwater pools rely on salt chlorine generators for sanitization, minimizing the amount of chemicals and chloramine buildup in the water. AquaGuard® Balance, Clarify, Algae Control, and Shock chemicals are compatible with saltwater systems.

How To Maintain A Saltwater Pool:

- Test pool water weekly for free chlorine and pH levels
 - Free chlorine levels should be within 2.0-4.0 ppm
 - Optimal pH level should be within 7.4-7.6
- Use test strips monthly to test pool water for salt, alkalinity, stabilizer, and calcium
- Open and visually inspect cell every three months for maximum performance
- Ensure filter, pump, and skimmer are clean
- Make sure water flow is at optimal levels



All AquaGuard® chemicals are compatible with saltwater pools.



AQUA GUARD®
5-Step Pool Care System



AQUA GUARD®

AquaGuard® 40 Lb Pool Salt

- For Use In Pools And Spas With Salt Chlorinators
- Brands May Vary By Region
- Not Available In All Markets

◆
116038

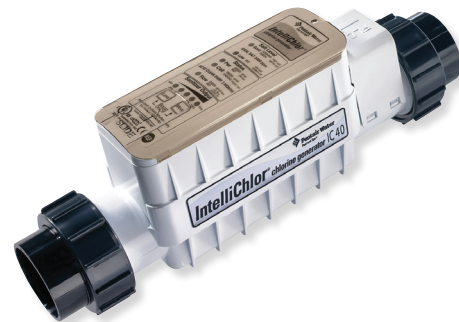


◆ PENTAIR

Pentair Power Center For Intellichlor IC40 And IC60 Cells

- 110 Vac Or 220 Vac Wiring
- Certified To UL 1081 Standard For Safety And NSF Approved

Mfg #520556
123160



◆ PENTAIR

Pentair Intellichlor Salt Chlorinator Cell

- Intellichlor Salt Chlorinator Uses Common Table Salt To Produce All The Chlorine A Pool Needs Safely, Effectively, And Automatically
- Push-Button Operation And Easy-To-View Displays Enable Fast Checking Of Salt Levels, Cell Cleanliness, Sanitizer Output, And Water Flow
- Automatic Shutoff Feature Protects The Unit And Prolongs Cell Life Under Low Water Temperature Conditions

IC40 Cell
Mfg #520555
123159

IC60 Cell
Mfg #521105
123158

WATER TESTING

We recommend testing commercial pools daily. Be sure to test pH levels, chlorine, total alkalinity, calcium hardness, and more. Enter your results into our online Pool Water Testing Tool for product recommendations and dosing instructions: hdsupplysolutions.com/poolwatertesting

Recommended Levels:

- pH: 7.4-7.6
- Chlorine: 2.0-4.0 ppm
- Total Alkalinity: 80-120 ppm
- Calcium Hardness: 200-400 ppm

Test Kit Storage Tips

Test kit reagents typically last one season and cannot be mixed with another test kit. Be sure to store in a cool, dark location for longer shelf life.



Taylor Pool Test Kit

- 3/4 Oz Reagents
- DPD
- Tests For Free And Total Chlorine, Bromine, pH, Acid/Base Demand, Total Alkalinity, Calcium Hardness And Cyanuric Acid

115214



Taylor Commercial Pool Test Kit

- 2 Oz Reagents
- DPD
- Tests For Free And Total Chlorine, Bromine, pH, Acid/Base Demand, Total Alkalinity, Calcium Hardness And Cyanuric Acid

114219



Taylor Commercial Pool Inspector's Test Kit

- 3/4 Oz Reagents
- DPD
- Tests For Free And Total Chlorine, pH, Acid/Base Demand And Cyanuric Acid
- Commonly Used By Health Inspectors For Public Pools/Spas

111316



Lamotte Colorq Pro 7 Test Kit

- Features A Photometer Which Gives You A Digital Reading Of Test Results
- Water Resistant Carrying Case Provided
- Tests Free Chlorine, Total Chlorine, Bromine, Ph, Alkalinity, Calcium Hardness, And Cyanuric Acid
- Uses Liquid Reagents For All Test Factors Except Cyanuric Acid, Which Uses Tablets

706572



Lamotte Colorq Pro 7 Test Reagent Refill Kit

- Includes One 30 mL Bottle Of DPD 1a Liquid Reagent For Free Chlorine, DPD 1b Liquid Reagent For Free Chlorine
- DPD 3 Liquid Reagent For Total Chlorine, pH Liquid Reagent For pH
- Alkaline Liquid Reagent For Total Alkalinity, Ch2 Liquid Reagent For Calcium Hardness
- Also Includes Ch1 Liquid Reagent For Calcium Hardness, Cya Testabs For Cyanuric Acid And 5 mL Color 6 Test Tubes

706573



Taylor R-0002-C, Reagent #2 DPD

- Free Chlorine Level Test
- 2 Oz

114622



Taylor R-0001-C, Reagent #1 DPD

- DPD Liquid Chlorine Test
- 2 Oz

114621



Taylor R-0870-1, DPD Powder

- DPD Powder Chlorine Test
- 10 Grams

114265



Taylor R-0004-C, Phenol Red #4

- pH Test
- 2 Oz

114624



Taylor R-0013-C, Cyanuric Acid

- Cyanuric Level Test
- 2 Oz

114633



Clorox Pool And Spa 6-Way Test Strips

- Tests Total Chlorine, Free Available Chlorine/Bromine, pH, Total Alkalinity, Total Hardness, Stabilizer

114119
Pkg Of 50





**MORE THAN 800 EQUIPMENT
PRODUCTS AVAILABLE ONLINE**

PART #	DESCRIPTION
A 114109	Leaf Skimmer - Aluminum Frame Skimmer With Plastic Guard - Quick Lock Handle Attaches To Any Standard Pole
B 114160	Leaf Rake - Aluminum Frame Skimmer With Plastic Guard - Quick Lock Handle Attaches To Any Standard Pole
C 114285	Commercial Leaf Rake - Heavy-Duty Aluminum Frame Skimmer With Plastic Guard - Heavy-Gauge Screen - Quick Lock Handle Attaches To Any Standard Pole
D 114140	18" Curved Metal Back Wall Brush - 1-1/2" Polypropylene Bristles - Quick Lock Handle Attaches To Any Standard Pole
E 116002	10" Stainless Steel Algae Pool Brush
F 114200	19" Professional Vacuum Head - Flexible Construction Allows It To Hug The Curves Of Pool Walls And Floor - Balanced And Weighted To Keep Vacuum Head Submerged - 12 Polyurethane Ball Bearing Wheels - Quick-Lock Handle Fits Any Standard Telescoping Pole - Use With 1-1/2" Vacuum Hose
G 114175	Standard Anodized Aluminum Telescopic Pole - Adjusts From 8 To 16' - Nylon Locking Device - Vinyl Handle Grip
H 114120	1-1/2" x 45' Deluxe Floating Vacuum Hose - UV Resistant - Lightweight - Leakproof Welded End Cuff - Crushproof - Swivel Cuff Rotates At Vacuum Head
I 114116	Swivel Wheel Leaf Bagger - Picks Up Leaves From Bottom Of Pool - Includes An Extra Large Polypropylene Bag - Brass Hose Connection For Added Durability
J 114171	8" Professional Thermometer - Combination Sink Or Float Thermometer - 36" Leash With Anchor Plate - Shatterproof Magnifying Lens - °F And °C Scales
K 123221	Maytronics Dolphin™ C3 Commercial Robotic Pool Vacuum - For Small To Mid-Size Commercial Pools - 60' Patented Swivel Cable - Cycle Time: 1 Or 2.5 Hours - Basic Remote Control - Full Filter Indicator - Fine And Ultra-Fine Cartridges Collect Both Fine Particles And Large Debris - Filter Type: Cartridge - Top Access Filter - Includes Caddy - 2 Year Bumper-To-Bumper Warranty - Mfg #99991073-C3
L 123222	Maytronics Dolphin™ C4 Commercial Robotic Pool Vacuum - For Small To Mid-Size Commercial Pools - 78' Patented Swivel Cable - Cycle Time: 1.5, 2.5 Or 3.5 Hours - Pro Remote Control With Delay Start Feature - Full Filter Indicator - Fine And Ultra-Fine Cartridges Collect Both Fine Particles And Large Debris - Filter Type: Cartridge - Top Access Filter - Includes Caddy - 2 Year Bumper-To-Bumper Warranty - Mfg #99991083-C4
M 166998	24" Life Ring - USCG Approved - White
N 114275	60' Heaving Line With Metal Hanger - Mildew Resistant Polypropylene Rope - Use With 166998 Life Ring
O 114164	Pool Life And Rescue Hook - Use With 167064 Fiberglass Pool Pole - Does Not Include Nuts And Bolts
P 167064	16" Rigid Fiberglass Pool Pole - 1-1/4" Outside Diameter
Q 114195	5 x 9" Blue/White Float - Fits 3/4" Rope - Unsinkable Polyethylene
R 116003	50' Blue/White Pool Rope - 3/4" Diameter Rope - Rope Hooks (114280) Not Included
S 114280	Socket Type Hook With Rope Cleat - For 3/4" Pool Rope - Use With 116003 Rope
T 114194	Sure-Step® Pool Ladder Tread - 18"W - Stainless Steel Bottom With Gray Top

POOL CLEANING PRODUCTS & ACCESSORIES



A - E

**EXCLUSIVE 2-YEAR
MANUFACTURER'S WARRANTY FOR
PENTAIR PUMPS**



G



F



Complete Pump
Assemblies

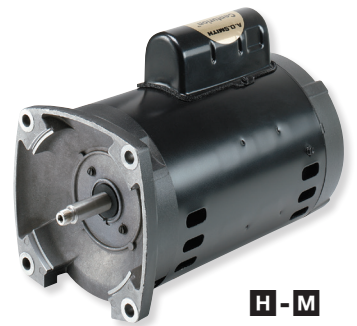


POOL PUMPS

PART #	DESCRIPTION
A 166990	1-1/2 HP Challenger® High Head Up-Rated Pool Pump - 115/230 Volt - Service Factor Of 1.1 - Standard 2" Suction And Discharge Ports - Transparent Strainer Lid - One Bolt Stainless Steel Clamp Removes Easily For Service Or Winterizing - Mfg #346206
B 166995	2 HP Challenger® High Head Up-Rated Pool Pump - 115/230 Volt - Service Factor Of 1.1 - Standard 2" Suction And Discharge Ports - Transparent Strainer Lid - One Bolt Stainless Steel Clamp Removes Easily For Service Or Winterizing - Mfg #346201
C 114202	1-1/2 HP Challenger® High Head Full-Rated Pool Pump - 230 Volt - Service Factor Of 1.5 - Standard 2" Suction And Discharge Ports - Transparent Strainer Lid - One Bolt Stainless Steel Clamp Removes Easily For Service Or Winterizing - Mfg #345201
D 114201	2 HP Challenger® High Head Energy-Efficient Full-Rated Pool Pump - 208/230 Volt - Service Factor Of 1.3 - Standard 2" Suction And Discharge Ports - Transparent Strainer Lid - One Bolt Stainless Steel Clamp Removes Easily For Service Or Winterizing - Mfg #345208
E 116899	3 HP Challenger® High Head Energy-Efficient Full-Rated Pool Pump - 208/230 Volt - Service Factor Of 1.15 - Self-Priming With Flow Rates To 145 GPM - Standard 2" Suction And Discharge Ports - Extra-Large Strainer Basket With Transparent Strainer Lid - One Bolt Stainless Steel Clamp Removes Easily For Service Or Winterizing - Mfg #345209
F 502544	Pentair® IntelliFlo® Variable Speed Pool Pump - High Tech Motor Reduces Noise And Vibration For Greater Efficiency And Longer Life - Variable Speed Technology Provides Significant Energy Efficiency - Provides Energy Savings Compared To Traditional Pumps
G 116906	IntelliFlo® Vacuum Release System And Pump - ASME/ANSI A112.19.17 (VGB) Compliant - Detects Blockage And Automatically Shuts Off Pump - Variable Speed Pump Achieves 30-90% Energy Savings - One Size Fits All 0.5 HP To 3.0 HP - Advanced Technology Saves Lives And Saves Money

MOTOR REPLACEMENTS

PART #	UP-RATED SQUARE FLANGE POOL REPLACEMENT MOTOR
H 114198	1 HP Square Flange Pool Replacement Motor - Up-Rated - Single Phase - 115/230 Volt - Service Factor Of 1.25 - Total Output=1.25 HP - Mfg #B853
I 114199	1-1/2 HP Square Flange Pool Replacement Motor - Up-Rated - Single Phase - 115/230 Volt - Service Factor Of 1.1 - Total Output=1.65 HP - Mfg #B854
J 114204	2 HP Square Flange Pool Replacement Motor - Up-Rated - Single Phase - 230 Volt - Service Factor Of 1.1 - Total Output=2.20 HP - Mfg #B855
PART #	FULL-RATED SQUARE FLANGE POOL REPLACEMENT MOTOR
K 114340	1 HP Square Flange Pool Replacement Motor - Full-Rated - Single Phase - 115/230 Volt - Service Factor Of 1.65 - Total Output=1.65 HP - Mfg #B848
L 114345	1-1/2 HP Square Flange Pool Replacement Motor - Full-Rated - Single Phase - 230 Volt - Service Factor Of 1.5 - Total Output=2.25 HP - Mfg #B849
M 114205	2 HP Square Flange Pool Replacement Motor - Full-Rated - Single Phase - 230 Volt - Service Factor Of 1.3 - Total Output=2.60 HP - Mfg #B748



H - M

IMPORTANT NOTE: Always replace the pump seal (114528) when installing a new motor to avoid severe damage to system.

FOR YOUR INFORMATION

Up-Rated? Full-Rated?

Which one do you choose? Motors are rated to operate to listed capacity. When replacing a pump and/or motor on an existing system, it is important to use the correct replacement. That can easily be accomplished by checking your currently installed equipment. Find the motor's nameplate. Locate the HP (horsepower) shown on the nameplate and multiply that by the SF (service factor) shown on the nameplate. The HP times the SF of the replacement motor must be equal to (or greater) than HP times SF of the motor being replaced.

Total Output = Nameplate Horsepower x Service Factor

FYI-0390



SR Smith.

SR Smith Splash! ADA Compliant Pool Lift

- 360° Rotation For Transfer Safety And Flexibility
- LiftOperator® Intelligent Controller With 24V Battery
- Powder-Coated Stainless Steel And Aluminum Construction
- 300 Lbs Lifting Capacity
- Semi-Permanent Installation

114638

Splash Lift Cover
502576



Aqua Creek Scout 2 ADA Lift

- Weight Capacity Of 375 Lbs
- 360° Rotation
- Made With Stainless Steel And Has An Attractive Powder Coat Finish
- Adjustable Seat Pole, Robust Base And A Strong Actuator
- Water Resistant Push Button Remote Control
- Rechargeable Battery With Wall Mount Charger

706581



Aqua Creek Patriot Portable ADA Pool Lift

- 400 Lb Weight Capacity; 375 Lb For Up To 6" Draft Pools
- Dual Flip-Up Arms
- White Powder Coat Finish
- Stainless Steel Construction
- Removable And Adjustable Footrest
- Submersible 2-Button Remote
- 24 Volt Rechargeable Battery And Charger Included

530370

ADA POOL LIFTS

We carry ADA-compliant pool lifts from the leading national brands, including SR Smith and Aqua Creek.

ADA POOL COMPLIANCE

Any pool open to the public must comply with ADA pool lift regulation.

ADA Regulations:

- ADA requires an accessible means of entry or exit for people with disabilities. (This is a requirement for hospitality properties.)
- Pools with less than 300 linear feet of pool wall must provide one means of access
- Pools with more than 300 linear feet of pool wall must provide two means of access

Maintenance Tips

Routine lift maintenance and cleaning are essential for ensuring accessibility. Be sure to:

- Check and charge battery daily
- Lubricate all gears on a monthly basis
- Test for normal operation
- Inspect cable connections on a monthly basis
- Inspect for lift damage
- Use a lift cover when not in use and avoid storing lift near pool chemicals
- Clean seat, lift, etc. regularly

HENRY

1 Lb Henry® Underwater Tile Repair

- Use For Underwater Tile Repair In Swimming Pools And Spas
- Allows For Repairs To Be Done Without Draining The Water
- 24-Hour Dry Time
- Use With All Tile Types
- Covers Approximately 2 Sq Ft

807017



RUST-OLEUM
INDUSTRIAL BRANDS

1 Gallon Rust-Oleum® Pool Paint Clean And Prep Solution

- Cleans And Degreases The Surface
- Dissolves Mineral Deposits
- Increases Surface Porosity For Adhesion
- Safe To Use Near Plants And Grass
- Turns 3 Steps Into 1
- VOC Compliant, Odor And Fume Free
- 1 Gallon Covers 400-800 Sq Ft

◆
531473



RUST-OLEUM
INDUSTRIAL BRANDS

1 Gallon Rust-Oleum® Acrylic Pool Paint

- Excellent Solution When Downtime Is Critical
- Self-Priming Two-Coat System
- Works Best On Clean, Cool And Damp Surfaces
- VOC Compliant

White
◆
531408



Marlin Blue
◆
531409



RUST-OLEUM
INDUSTRIAL BRANDS

2 Gallon Rust-Oleum® High Build Epoxy Pool Paint Kit

- Use On Concrete, Plaster And Fiberglass Surfaces
- Chemical Resistant Coating
- Two Gallon Kit With A 1:1 Mix Ratio
- Covers Up To 250 Sq Ft
- Bare Concrete Requires Two Coats

White
◆
531406



Marlin Blue
◆
531407



60 Watt PAR-16 Halogen Spa Bulb

- 120 Volt
- Medium Base
- 2,500 Average Hour Life
- 2" Diameter

309012



R-40 500 Watt Clear Swimming Pool Bulb

- 130 Volt
- Medium Base
- 2,000 Average Hour Life
- 5" Diameter

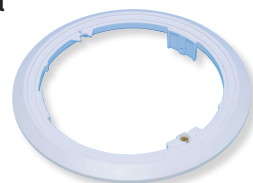
310166



Universal Pool Light Adapter Ring

- #500P Model Adapts To Same Lights That Fit All 500, 500B And 500C Models
- White

170008



22 x 44" Blue Center Stripe Pool Towel

- 6 Lbs/Dozen
- Cam Border
- 100% Cotton
- Hemmed On All Four Sides

763027
Pkg of 12



24 x 50" Blue Center Stripe Pool Towel

- 10 Lbs/Dozen
- Cam Border
- 100% Ring-Spun Cotton Construction
- Hemmed On All Four Sides

502780
Pkg of 12



martex

Martex® 24 x 50" Morning Glory Pool Towel

- 10.5 Lbs/Dozen
- Double Dobby Border On One End
- Cotton/Polyester Blend With Ring-Spun Cotton Loops

718451
Pkg of 12



martex

Martex® 20 x 40" Blue Center Stripe Pool Towel

- 5.5 Lbs/Dozen
- Cotton/Polyester Blend
- Cotton Loops For Maximum Absorbency
- Hemmed On All Four Sides

763499
Pkg of 12



More robotic vacuums available online.



Pool Sign “No Glassware Allowed In Pool Area”

- Heavy-Duty Polyethylene
 - 14 x 10"
 - Fade, Tear And Weather Resistant
 - Predrilled Holes For Mounting
- 167120**



Pool Sign “Swimming Pool Closed”

- Heavy-Duty Polyethylene
 - 12 x 18"
 - Fade, Tear And Weather Resistant
 - Predrilled Holes For Mounting
- 167125**



Pool/Spa Safety Sign “Caution! No Diving!”

- Heavy-Duty Plastic
 - 20 x 14"
 - Weather And Tear Resistant
 - Predrilled Holes For Mounting
- 817952**



Pool/Spa Safety Sign “Pool Rules”

- Heavy-Duty Plastic
 - 28 x 20"
 - Weather Resistant
 - Predrilled Holes For Mounting
 - Complies With State Of Florida Regulations
- 817955**



Pool/Spa Safety Sign “Pool Rules”

- Heavy-Duty Plastic
 - 28 x 20"
 - Weather Resistant
 - Predrilled Holes For Mounting
 - Complies With State Of California Regulations
- 817956**



Pool/Spa Safety Sign “Warning No Lifeguard On Duty”

- Heavy-Duty Plastic
 - 20 x 28"
 - Weather Resistant
 - Predrilled Holes For Mounting
- 817954**



Custom Pool Pass Tags

- Bright Colors Identify Residents Quickly, Have Different Colors For Residents and Guests
 - Works With Most Fasteners
 - Sold In Packs of 100
- 272768**



Stock Recreational Pool Pass

- Quickly Identifies Pool Members
- Works With Most Fasteners
- Sold In Packs of 100

Red 735948 **Blue** 735941
Green 735954



Stock Recreational Pool Pass

- Quickly Identifies Pool Members
- Works With Most Fasteners
- Sold In Packs of 100

Yellow 735952 **White** 735945



Pool Pass

- Quickly Identifies Pool Members
- Laminated Plastic Material Won't Chip, Fade Or Peel
- Sold In Packs of 100

Paradise 272295 **Palm Trees** 272169
Bubbles 735936



- Silicone Wristbands Are Flexible And Comfortable
- Debossed “Pool Pass” Never Wears Off
- Highly Visible As Proof Of Membership
- Adult Size
- 8L x 1/2W x 1/16" D
- Sold In Packs of 100

STOCK POOL PASS BRACELETS

PART #	COLOR
116724	Blue
116726	Green
116728	Orange
116730	Red
116732	White
116734	Pink
116736	Yellow



Grosfillex® Bahia Chaise Lounge

- Twice As Resistant To UV Degradation As Ordinary Resin Chaises
- Rated To 300 Lb Resistance To Breakage Under Static Load
- Recessed Rollaway Wheels
- 4-Position Adjustable Back
- Stackable

Pkg Of 6



762002
White

762057
Sandstone



Sunset Collection chair arms are ordered separately as an add-on.

Grosfillex® Pacific Fanback Chair

- Solid One-Piece Molded Construction
- Fanback Design
- Stackable
- Glossy Finish

Pkg Of 4



762054
Sandstone

762000
White

Grosfillex® Ibiza 46" Round Table

- Tulip Resin Base With Broad Span For Increased Stability
- 46" Dia x 29"H



763278
Sandstone

762001
White

Grosfillex® Sunset Sling Chaise Lounge

- Platinum Gray Sling/Solid Gray Frame
- Made Of Grosfillex®'s New Technopolymer With Air Molding Technology (AMT) To Provide Weather Resistance And Durability With The Strength Of Metal
- Recessed Wheels For Ease Of Relocation

Pkg Of 2



116567
Platinum Gray Sling/
Solid Gray Frame

116016
Gray Sling/Volcanic
Black Frame

116017
White Sling/Glacier
White Frame

116015
Cognac Sling/Fusion
Bronze Frame

Grosfillex® Sunset Stacking Armchair

- Made Of Grosfillex®'s New Technopolymer With Air Molding Technology (AMT) To Provide Weather Resistance And Durability With The Strength Of Metal
- Microban® Anti-Microbial Treatment To Resist Mold And Mildew

Pkg Of 4



116565
Gray Sling/
Platinum Gray Frame

116011
White Sling/Glacier
White Frame

116010
Gray Sling/Volcanic
Black Frame

116009
Cognac Sling/Fusion
Bronze Frame

Grosfillex® 36" Square Sunset Table

- Made Of Durable, Uniquely Finished High-Pressure Laminate Sheet For A Lasting Dramatic Effect
- Umbrella Hole With Protective Ring And Plug For Standard 1-1/2" Umbrella Pole
- Leg Levelers For Uneven Surfaces
- Nylon Footpads To Resist Wear



116594
Lava Top/Fusion
Bronze Legs

116592
Concrete Top/
Volcanic Black Legs

116593
Concrete Top/
Platinum Gray Legs

116595
White Top/Glacier
White Legs

Grosfillex® Sunset Sling Sofa

- Microban® Textile Fabric Dries Quickly And Retains Its Good Looks With Its Anti-UV And Anti-Bacterial Properties
- Non-Skid Footpads
- Easily Replaceable Textile Sling

Pkg Of 2



116578
Gray Sling/Volcanic
Black Frame

116577
Gray Sling/Platinum
Gray Frame

116579
White Sling/Glacier
White Frame

116580
Cognac Sling/Fusion
Bronze Frame



Most popular colors in stock:

- Pacific Blue
- Beige
- Forest Green



Fiberbuilt™ 7.5' Crank Garden Umbrella, Tilt

- Flexible Fiberglass Ribs
- Nylon Joints, Hubs, Finials And End-Tips
- Powder Coated Finish
- Valance Style Canopy
- Vinyl Coated Weave Canopy
- 1-Year Limited Warranty

Pacific Blue

Beige

Navy Blue

Black

Natural

735704 Forest Green

753122 Navy Blue

735703 Pacific Blue

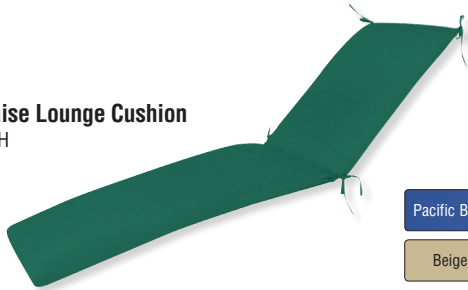
753123 Black

735702 Beige

753121 Natural

Fiberbuilt™ Chaise Lounge Cushion

- 22W x 74L x 2.5"H
- Hinged At 30"
- Spun Poly Fabric
- Knife Edge
- Blown Fill
- Ties At Hinge



Pacific Blue

Beige

Navy Blue

Black

Natural

753109 Forest Green

753112 Navy Blue

753110 Pacific Blue

753114 Black

753113 Beige

753111 Natural



Fiberbuilt™ 7.5' Push-Up Or Crank Market Umbrella

- Contract Quality
- 1.5" Dia 2-Piece Bronze Pole
- Outdura Spun Acrylic 8603
- Marine Grade Fabric
- Wind Tested Over 50 Mph
- Made In The USA
- (8) Fiberglass Ribs, Nylon Hubs, Joints And End-Tips
- 5-Year Rib Replacement Warranty

Forest Green

Natural

Terra Cotta

Antique Beige

752496 Push-Up Pacific Blue

752499 Crank Pacific Blue

752494 Push-Up Forest Green

752497 Crank Forest Green

752495 Push-Up Natural

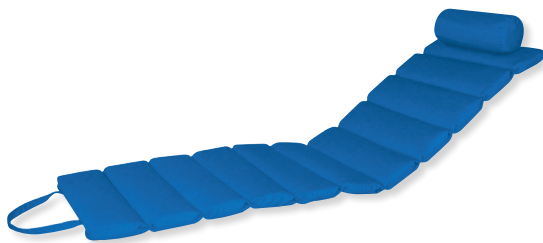
752498 Crank Natural

753097 Push-Up Terra Cotta

753100 Crank Terra Cotta

753099 Push-Up Antique Beige

753102 Crank Antique Beige



Fiberbuilt™ Custom Cushion Channel Chaise

- 23W x 75L x 3.5H"
- Sunbrella Spectrum Fabric
- Adds Comfort To Any Outdoor Seating
- Standard Outdoor Foam
- Made In The USA
- All Cushions Are Manufactured With High Quality Production Methods

Forest Green

Natural

Antique Beige

Terra Cotta

194629 Pacific Blue

753128 Antique Beige

194628 Forest Green

753129 Terra Cotta

194627 Natural

Fiberbuilt™ 55 Lb Concrete Umbrella Base

- Black Stem And Trim
- Accommodates Up To 1.75" Dia Pole
- Some Assembly Required

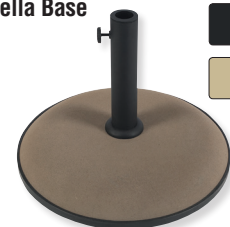
Black

Beige

753115 Champagne

753116 Black

753117 Beige

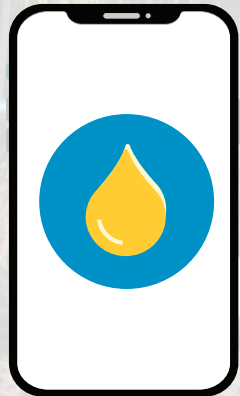




YOUR JOB IS BUSY. WE'RE HERE TO HELP.

With more than 100,000 maintenance and repair products; free, next-day delivery,* and industry-leading support, HD Supply is committed to being your single-source supplier. Trust us to make your job easier with:

- Upgraded website with one-click checkout
- Easy Order™ App for ordering anywhere
- 850+ dedicated delivery trucks
- 40+ distribution centers nationwide



Our Online Tool Makes Pool Care Easy

Take the guesswork out of pool maintenance. Our new online pool water testing tool lets you:

- Easily track your pool's chlorine, alkalinity, pH, acid, and calcium levels
- See recommended products and dosing instructions based on your results
- Add recommended AquaGuard® products to your shopping cart
- Save a log of your results for easy access

Visit hdsupplysolutions.com/poolwatertesting



© 2020 HDS IP Holding, LLC. All Rights Reserved. For our terms and conditions, visit hdsupplysolutions.com/terms.

20-21149



3 EASY WAYS TO ORDER

MOBILE APP

1.800.431.3000

hdsupplysolutions.com